

# 07 TAKING DOWN A HUNG UP TREE





## **Use of this worksheet**

This worksheet is part of a series of interactive worksheets that has been produced in association with Husqvarna to support the delivery of training for the City & Guilds (NPTC) suite of chainsaw qualifications.

**Copyright** © – all rights are reserved. No part of this publication may be reproduced, stored in a retrieval system or transmitted in any form by any means whatsoever without written consent from the copyright holder.

## **Content**

This worksheet covers the following outcomes:

**Be able to work safely**

**Know relevant health and safety legislation and industry good practice**

## Incorrect techniques for dealing with hung up trees

There are a number of incorrect techniques for dealing with hung up trees which can result in serious injury or fatalities.

**In addition to the ones shown below, list some of the others in the box provided.**



Other incorrect techniques might include:

- 1.
- 2.
- 3.
- 4.
- 5.

## Considerations for taking down hung up trees

The following are things to consider when taking down hung up trees:

- **assess the \_\_\_\_\_ of the tree and check the \_\_\_\_\_ of the hinge**
- **remove all \_\_\_\_\_ and \_\_\_\_\_ from the take down route**
- **decide on the final \_\_\_\_\_ direction**
- **prepare new \_\_\_\_\_ routes as appropriate**
- **select and \_\_\_\_\_ aid tools as required**
- **ensure that no \_\_\_\_\_ persons are within \_\_\_\_\_ tree lengths or directly \_\_\_\_\_ on steep slopes**
- **operator to work only in the \_\_\_\_\_**
- **tree to be \_\_\_\_\_ only once it is in a stable condition**

## Methods for taking down hung up trees

There are three main ways in which hung up trees can be taken down:

1. **Manually** using timber lengths to “walk” the tree backward, or dragging small trees with lifting aids.
2. **Using a winch** to assist with pulling/dragging, rolling or turning the hung up tree.
3. **Using machinery** for example a forwarder, harvester or skidder.

Draw the relevant cuts in the boxes provided


**MANUALLY**

**80 / 20**

**LETTER BOX**

## What to do if a hung up tree cannot be taken down

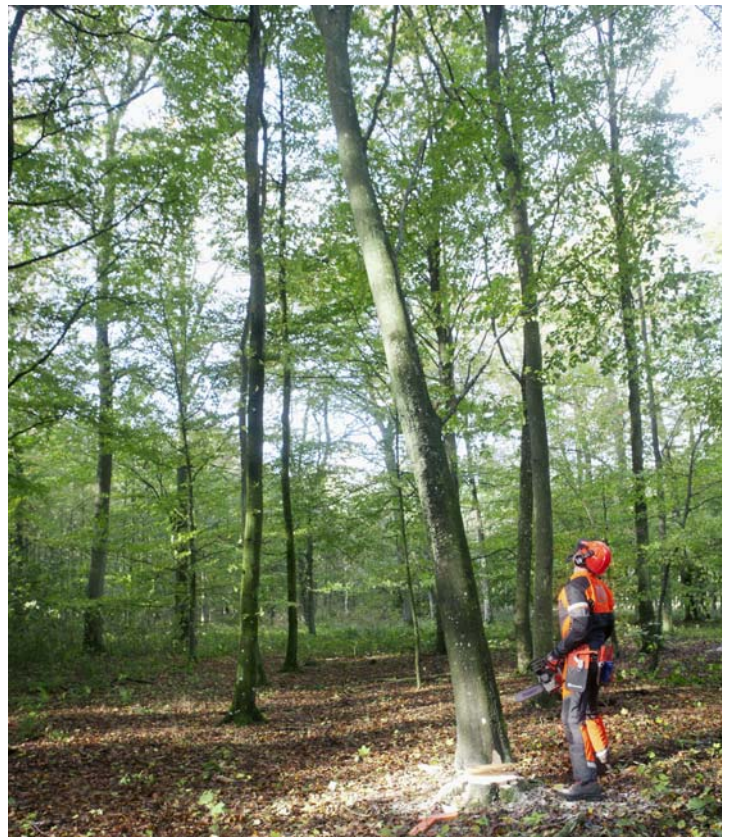
Next to the picture below, describe what actions should be taken if a tree cannot be taken down manually.

Picture	Actions
	

## Identification of the danger areas in respect of hung up trees

In order to avoid serious injury or possibly a fatality, it is important to know which areas around the tree are not safe.

In the picture on the right, indicate where the danger zones are around the hung up tree.



## Factors and precautions to consider when using a winch

Fill in the missing word

- \_\_\_\_\_ of the winch
- \_\_\_\_\_ method between operators
- security of \_\_\_\_\_
- \_\_\_\_\_ of components/strength loss of equipment in certain configurations
- \_\_\_\_\_ and inspection of all components
- \_\_\_\_\_ required for winching operations
- \_\_\_\_\_ of operators
- roles and \_\_\_\_\_ understood by all parties
- \_\_\_\_\_ zones including during off-set winching
- safe working \_\_\_\_\_

# NOTES

Published by:

City & Guilds  
Building 500  
Abbey Park  
Stareton  
Warwickshire  
CV8 2LY

T +44 (0)24 7685 7300

F +44 (0)24 7669 6128

[www.nptc.org.uk](http://www.nptc.org.uk)

e-mail: [information@cityandguilds.com](mailto:information@cityandguilds.com)

City & Guilds is a registered charity established to promote education and training